



MONTHLY MEMBERSHIP PROGRESS REPORT

District 22 W

Results as of: 07/31/2018

GMT: MAHESH CHITNIS

LOCATION MARYLAND

GMT CA

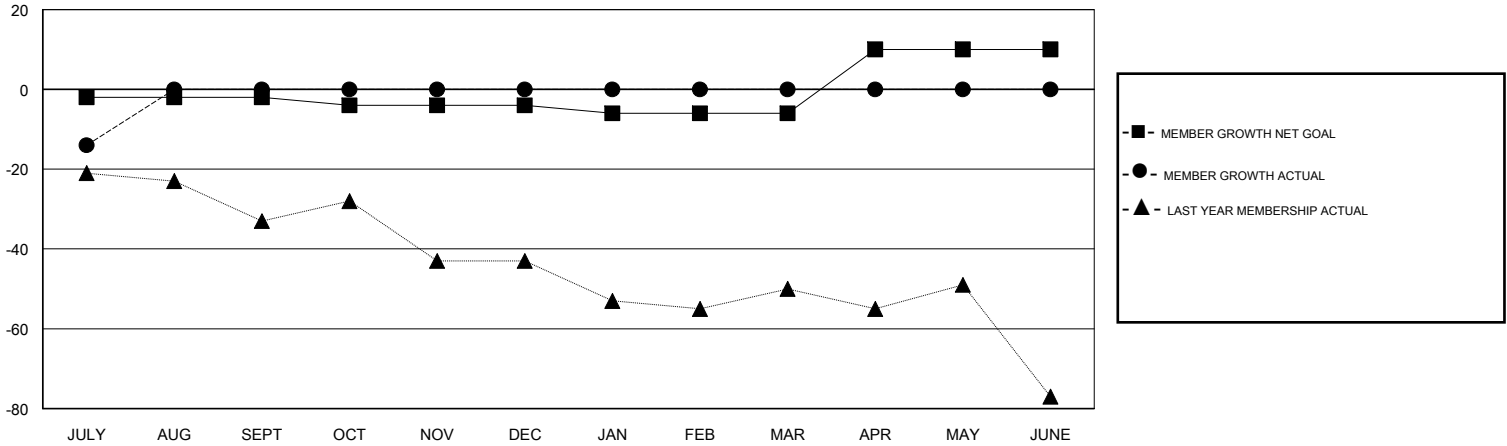
Clubs			
RESULTS FOR 2018-2019			
QUARTER	NEW CLUB GOAL	NEW CLUBS	DROPPED CLUBS
JULY/AUG/SEPT	0	0	1
OCT/NOV/DEC	0	0	0
JAN/FEB/MAR	0	0	0
APR/MAY/JUNE	1	0	0

Members			
RESULTS FOR 2018-2019			
QUARTER	MEMBER GROWTH NET GOAL	MEMBER GROWTH ACTUAL	DROPPED MEMBERS ACTUAL (including transfers)
JULY/AUG/SEPT	-2	17	25
OCT/NOV/DEC	-2	0	0
JAN/FEB/MAR	-2	0	0
APR/MAY/JUNE	16	0	0

GOALS AND ACTUAL NEW CLUBS CUMULATIVE



GOALS AND ACTUAL MEMBERS CUMULATIVE



DROPPED CLUBS: 1	8 CLUBS OF 58 ADDED 1 OR MORE NEW MEMBERS	GENDER DISTRIBUTION MALE 1,221 (64.57%) FEMALE 670 (35.43%) Women Percentage Fiscal Year Goal: 38%
DROPPED MEMBERS DECEASED 2 CLUB CANCELLED 0 OTHER 20 TOTAL 22	CLICK HERE FOR CUMULATIVE MEMBERSHIP DATA	TOTAL FAMILY UNIT MEMBERS 506 FAMILY MEMBERS PAYING HALF DUES 264